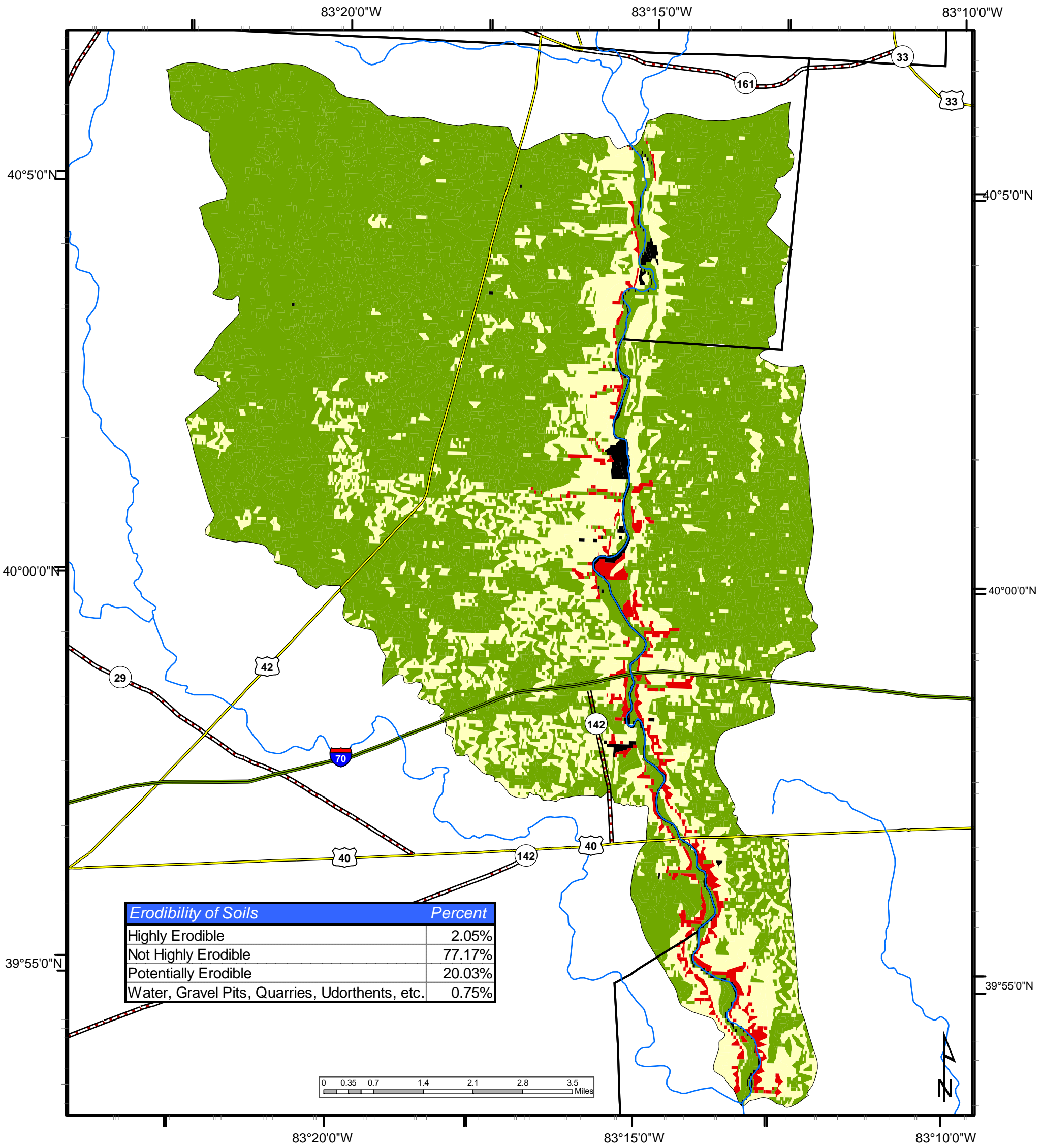


# Map A-2 - Erodibility of Soils in Middle Darby Watershed



Highly Erodible Soils

**Legend**

- Interstates
- U.S. Routes
- State Routes
- Major Streams
- County Boundary
- Middle Darby Creek Watershed

**Erodibility of Soils**

- Highly Erodible
- Not Highly Erodible
- Potentially Erodible
- Water, Gravel Pits, Quarries, Udorthents, etc.

- 1) Roads Layers
  - TIGER Line Data, 2000
- 2) Major Streams
  - National Hydrography Dataset
- 3) County Boundary
  - TIGER Line Data, 2000
- 4) Little Darby Watershed Boundary
  - 11 Digit Watershed Boundary; NRCS, 1999
- 5) Soils
  - OCAP (1971-1978) Polygon Files joined with
  - MUIR (1997) Soils Data
  - Edits made by Ben Webb through assistance of Sean Browning (NRCS)

Coordinate System  
UTM Zone 17N, NAD 1983  
Meters

Map Creator  
Ben Webb  
-Watershed Coordinator-  
November, 2003

