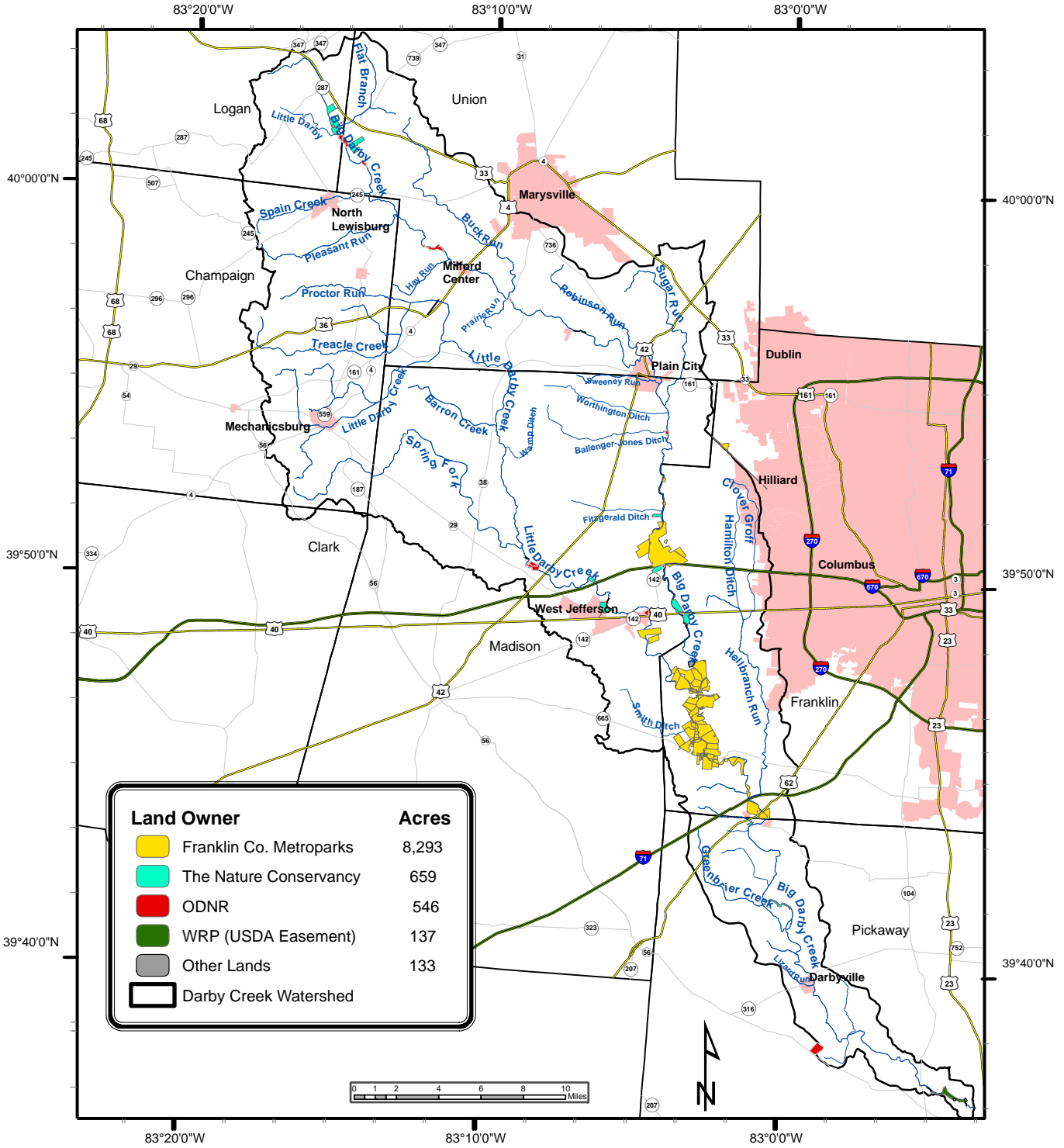


Map 16 - Agency and Non-Profit Land in the Darby Watershed



| Land Owner | Acres |
|-------------------------|-------|
| Franklin Co. Metroparks | 8,293 |
| The Nature Conservancy | 659 |
| ODNR | 546 |
| WRP (USDA Easement) | 137 |
| Other Lands | 133 |
| Darby Creek Watershed | |

Legend

- Major Streams
- U.S. Routes
- Interstates
- Municipal Boundaries
- Darby Creek Watershed
- County Boundary

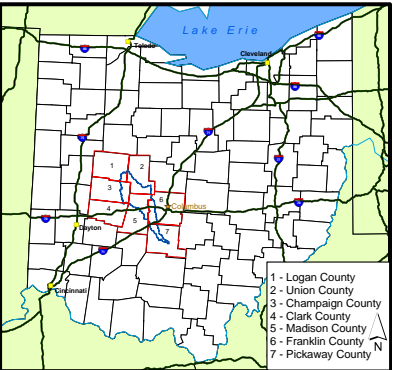
Preserved Lands

Data Sources

- 1) Roads Layers
 - TIGER Line Data, 2000
- 2) Streams
 - National Hydrography Dataset
- 3) County Boundary
 - TIGER Line Data, 2000
- 4) Preserved Lands
 - ODNR, 2005
- 5) Municipal Boundary
 - U.S. Census, 2000

Coordinate System
 UTM Zone 17N, NAD 1983
 Meters

Map Creator
 Ben Webb
 Watershed Coordinator
 January, 2005



Map 16