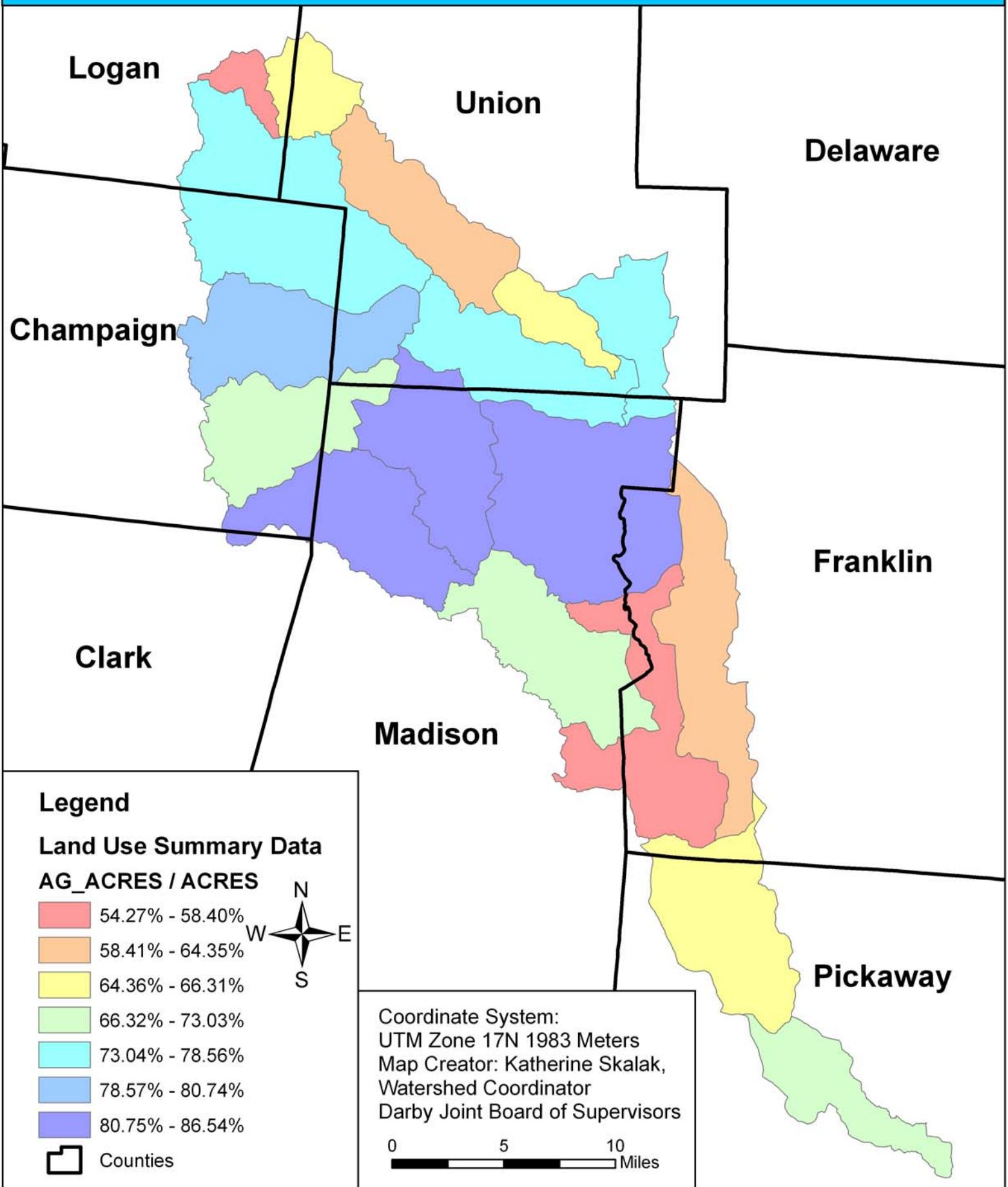


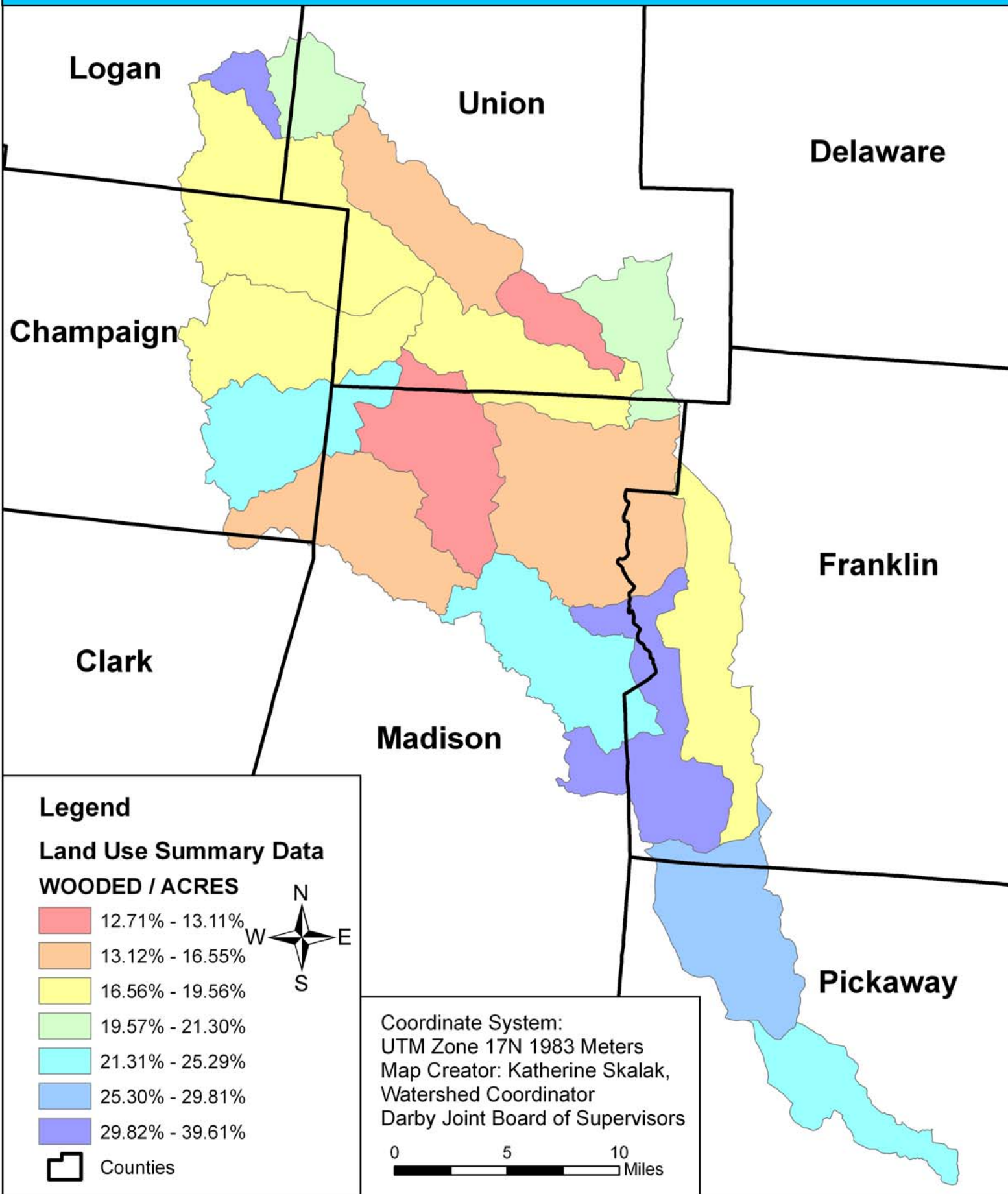
# Darby Watershed Summary Map

## - Land Used- Percent Agricultural Acres



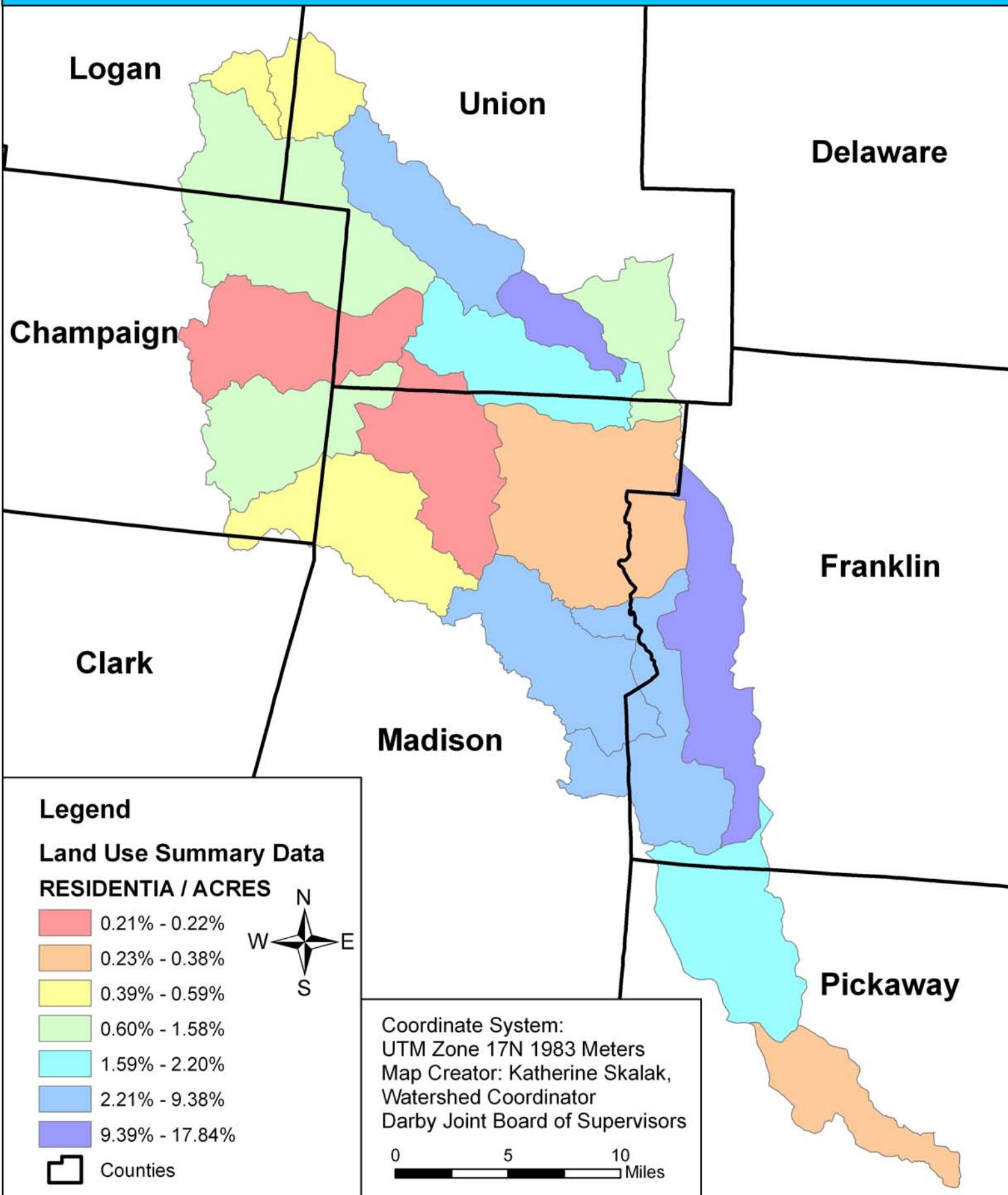
# Darby Watershed Summary Map

## - Land Used- Percent Wooded Acres



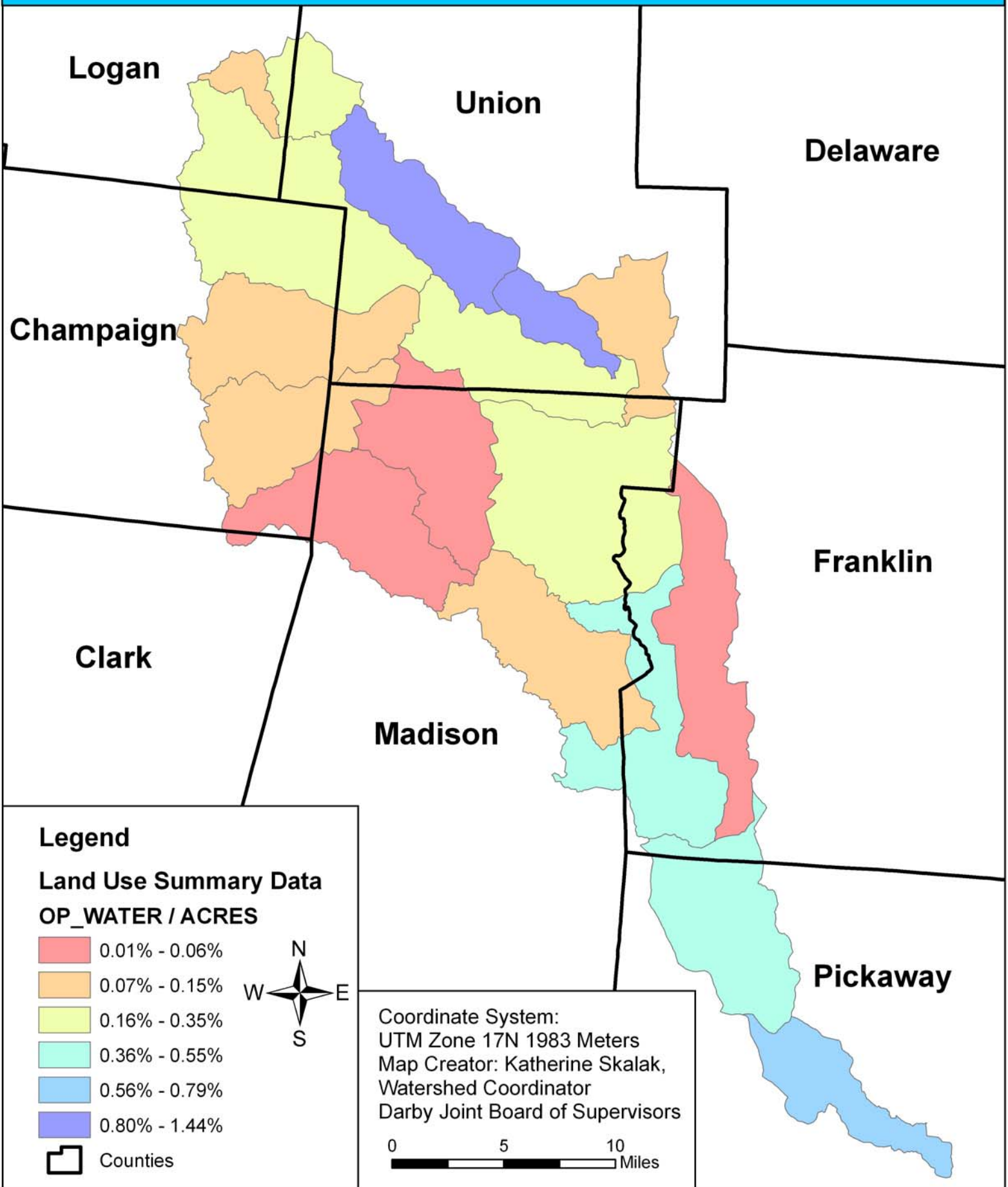
# Darby Watershed Summary Map

## - Land Used- Percent Residential Acres



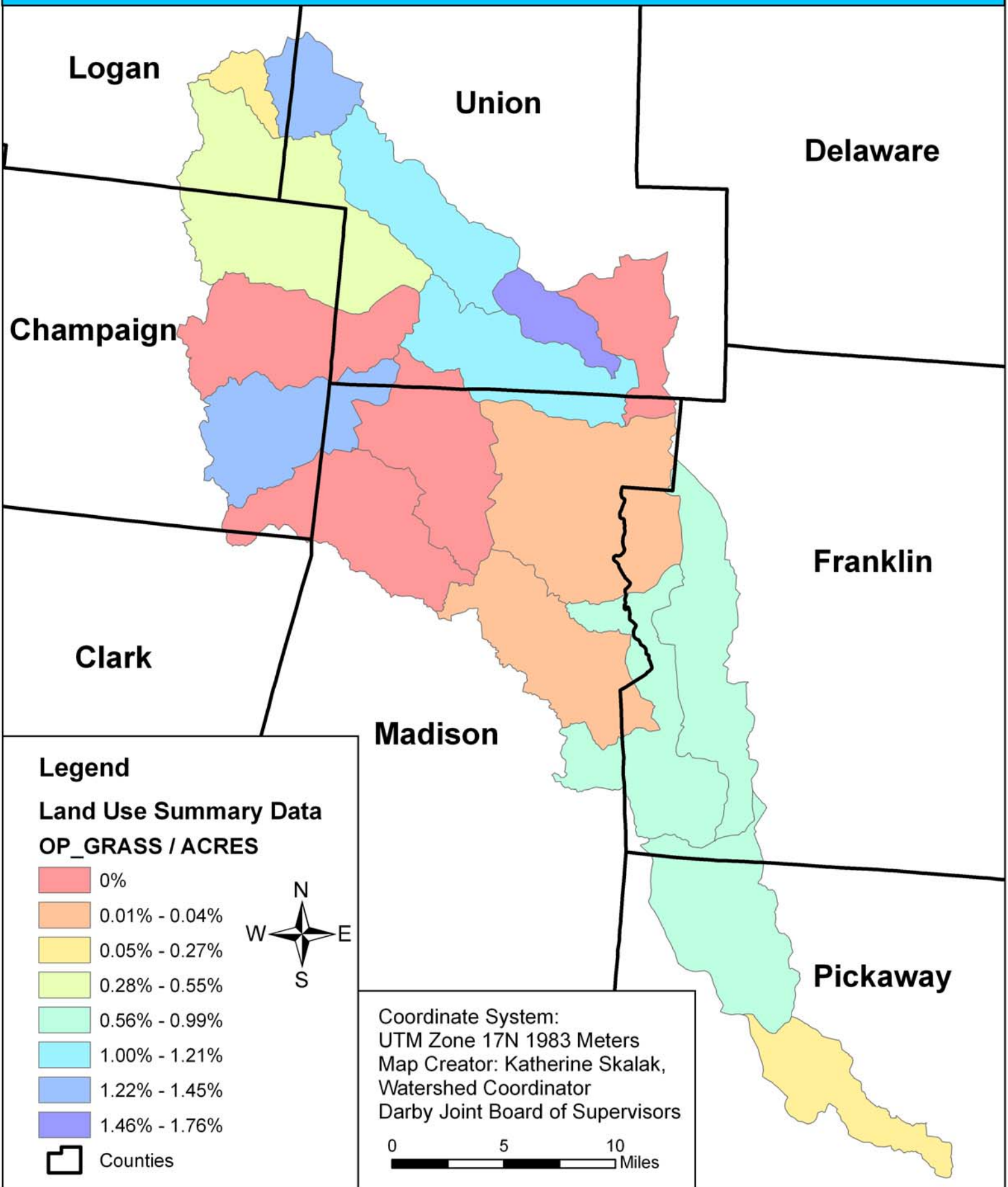
# Darby Watershed Summary Map

## - Land Used- Percent Open Water Acres



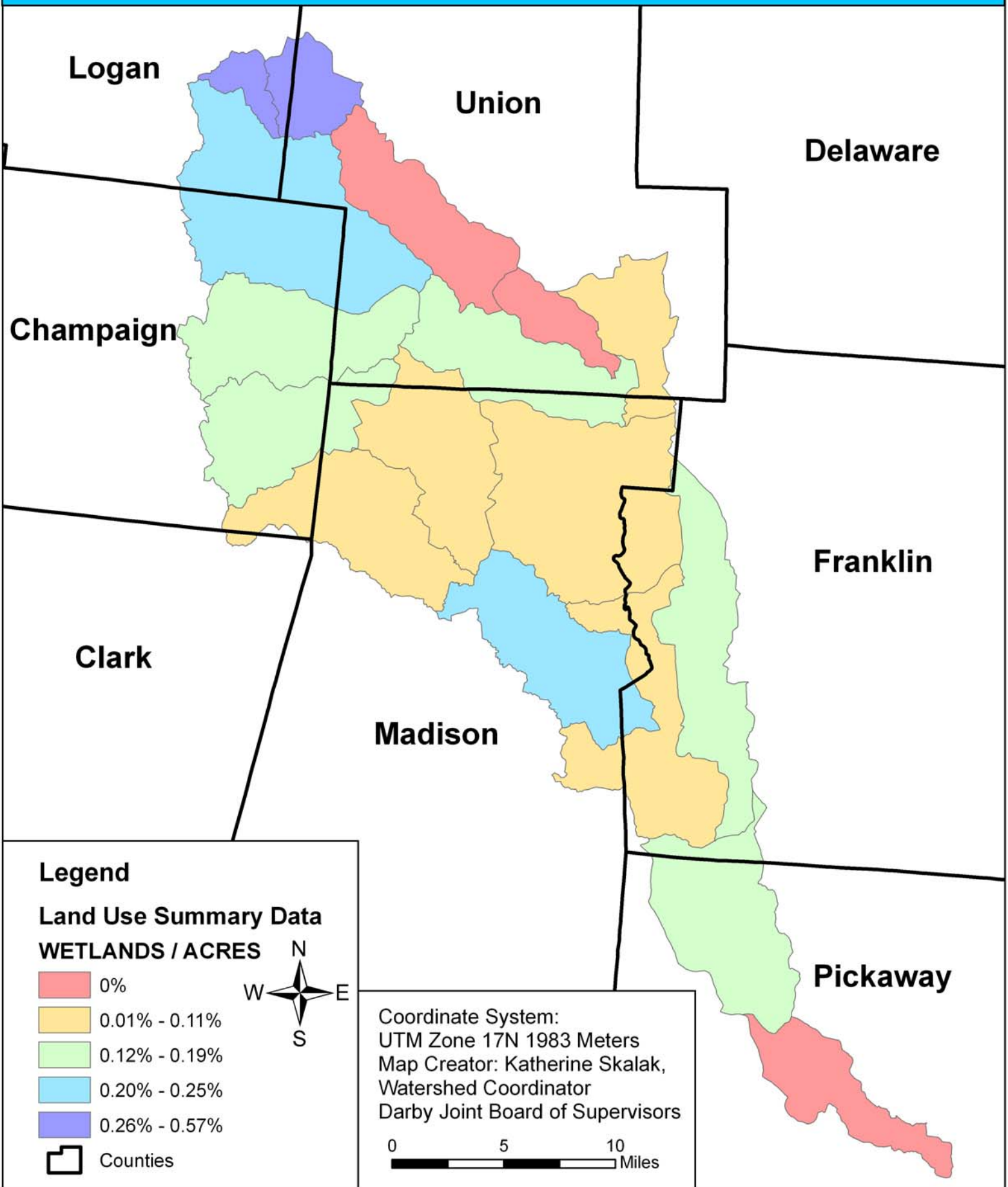
# Darby Watershed Summary Map

## - Land Used- Percent Open Grass Acres



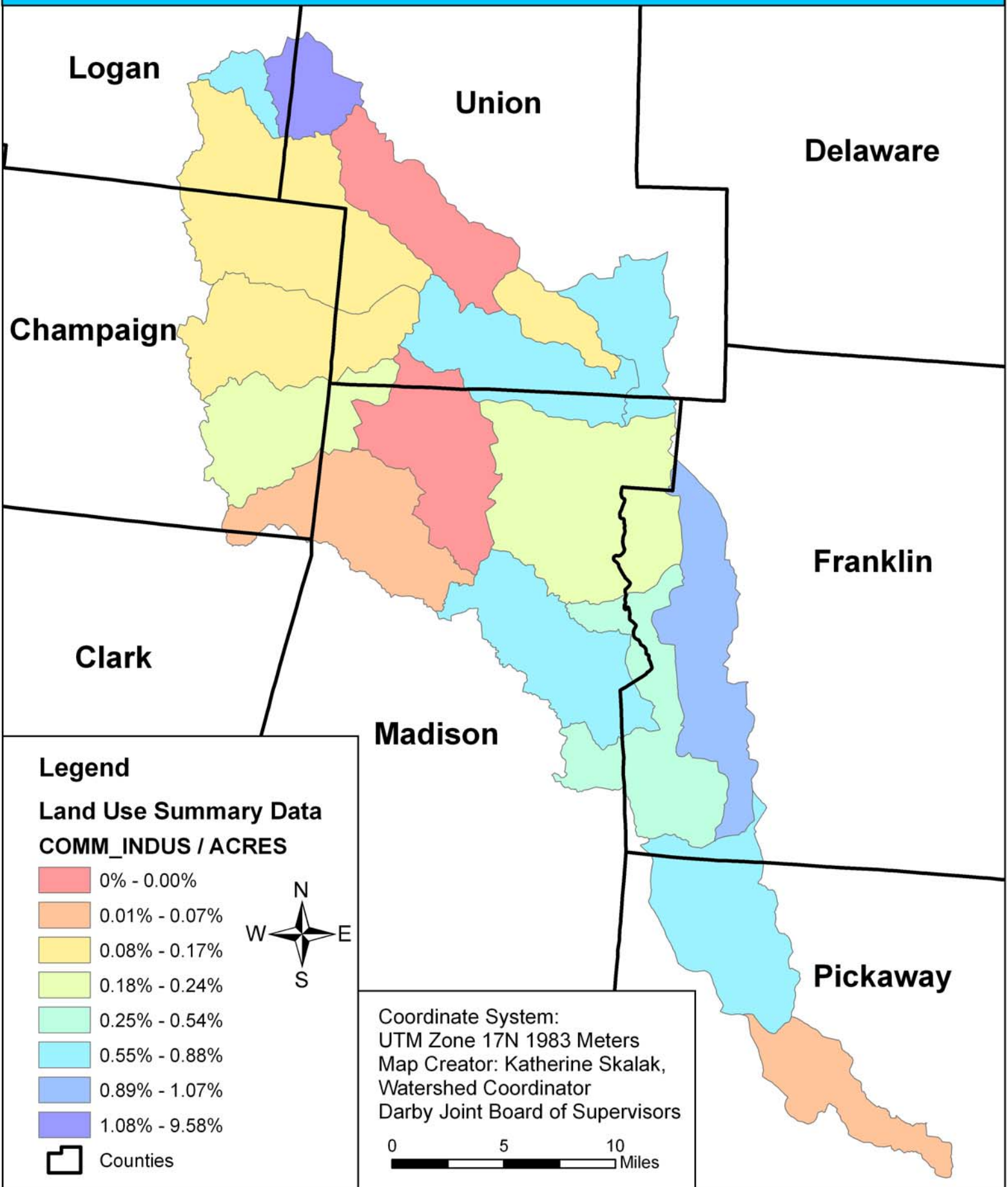
# Darby Watershed Summary Map

## - Land Used- Percent Wetland Acres



# Darby Watershed Summary Map

## - Land Used- Percent Commercial/Industrial Acres



# Darby Watershed Summary Map

## - Land Used- Percent Quarry Acres

