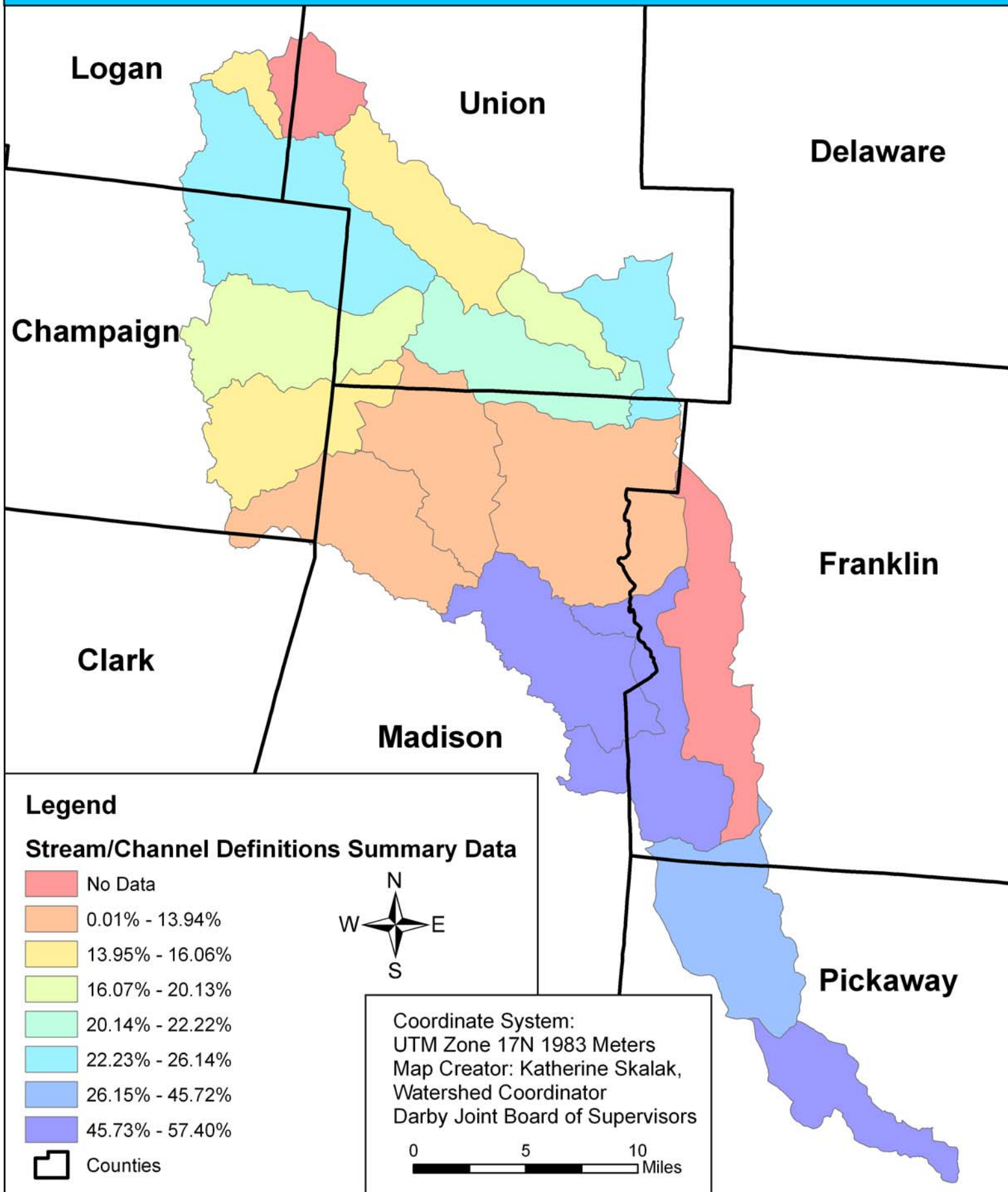


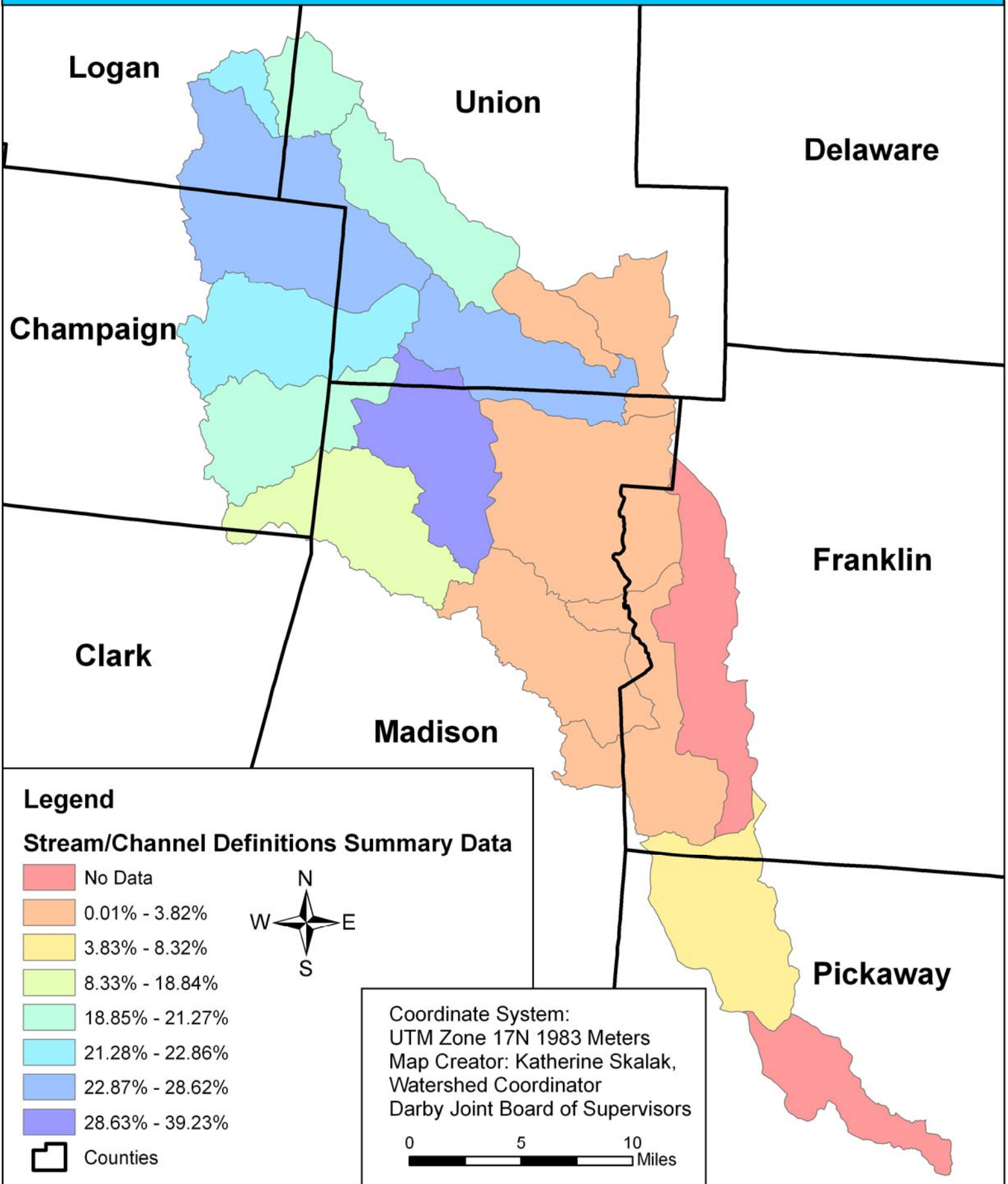
# Darby Watershed Summary Map

## - Percent Miles Defined as Stream



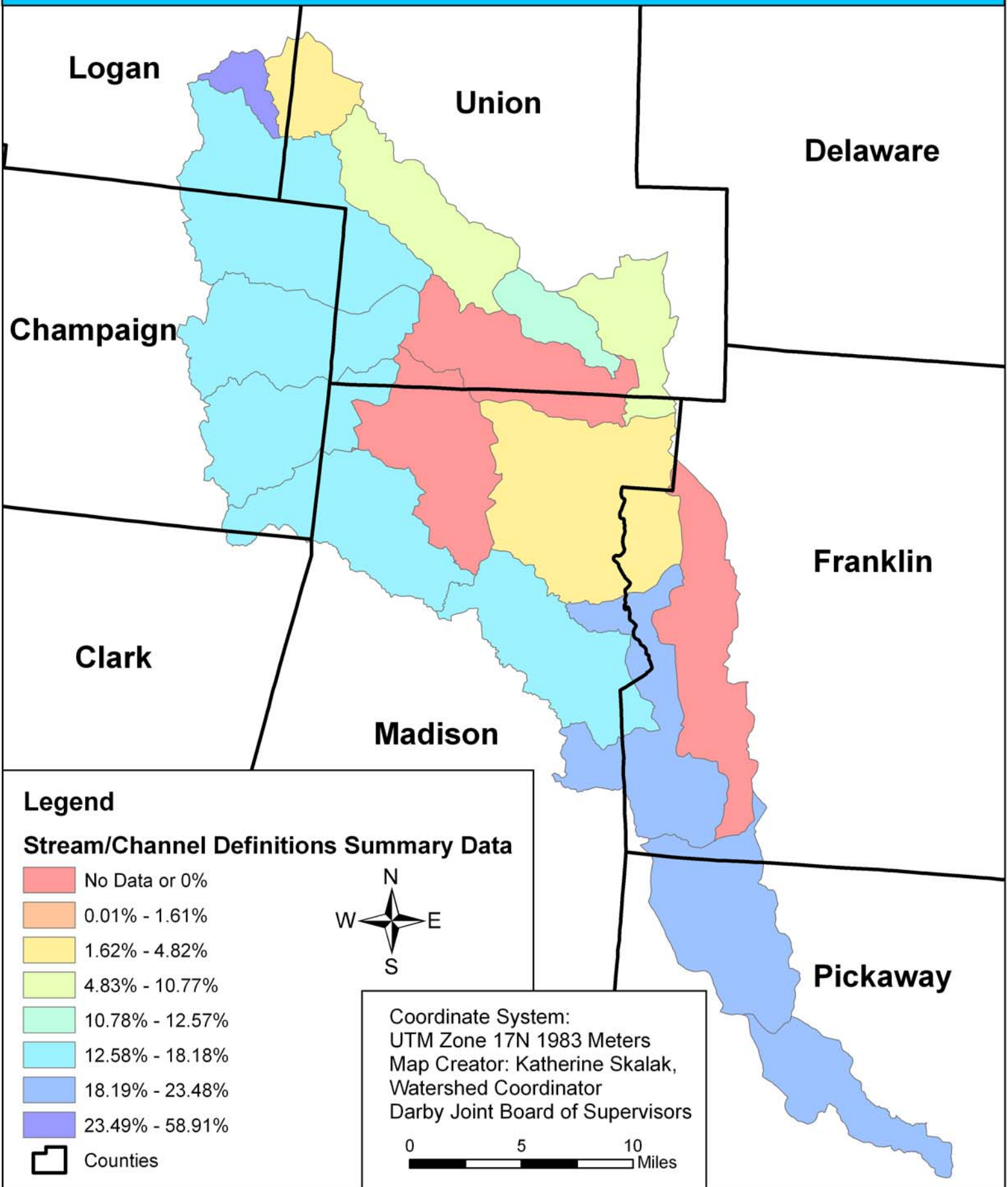
# Darby Watershed Summary Map

## - Percent Miles Defined as Modified Stream



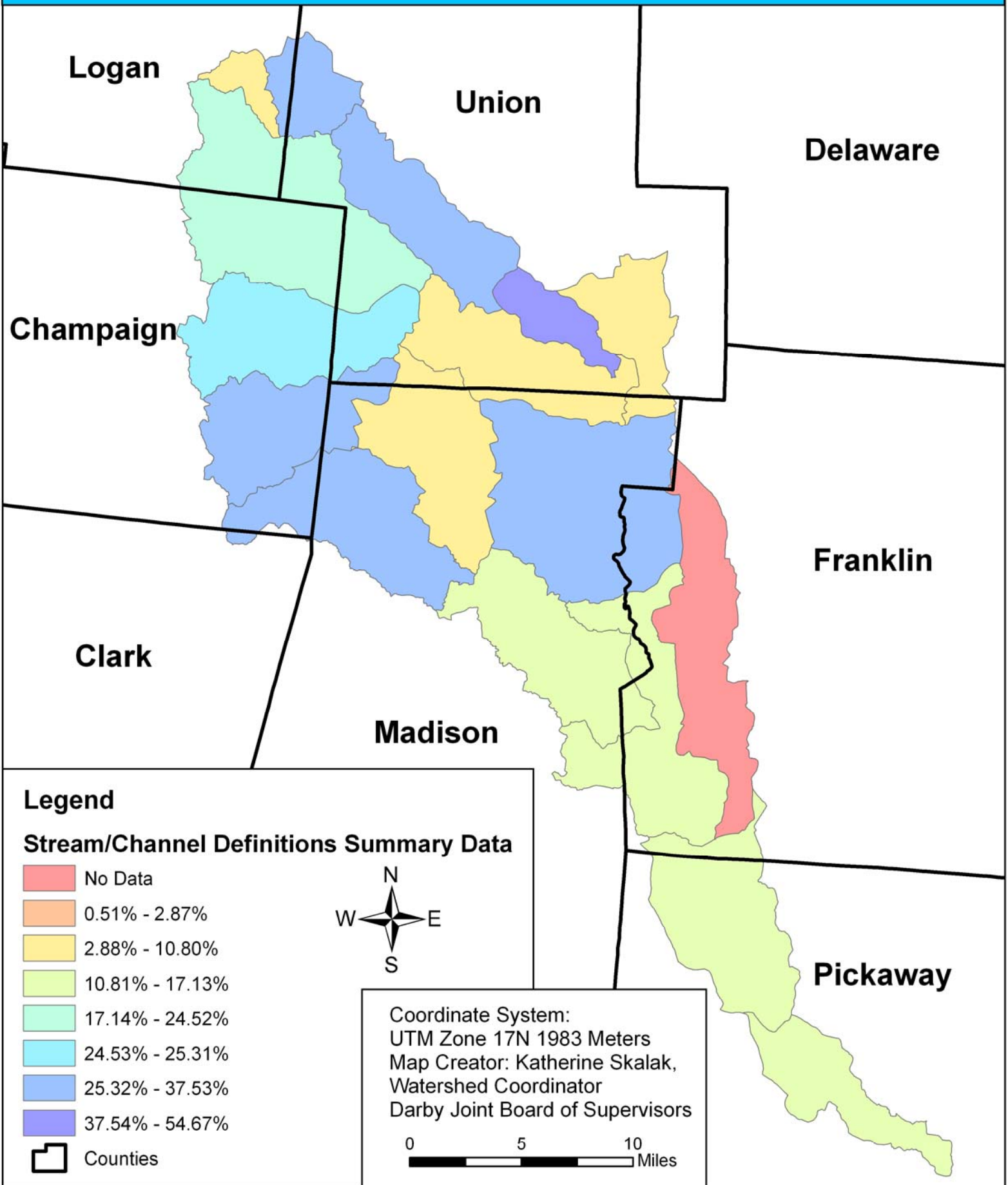
# Darby Watershed Summary Map

## - Percent Miles Defined as Channel



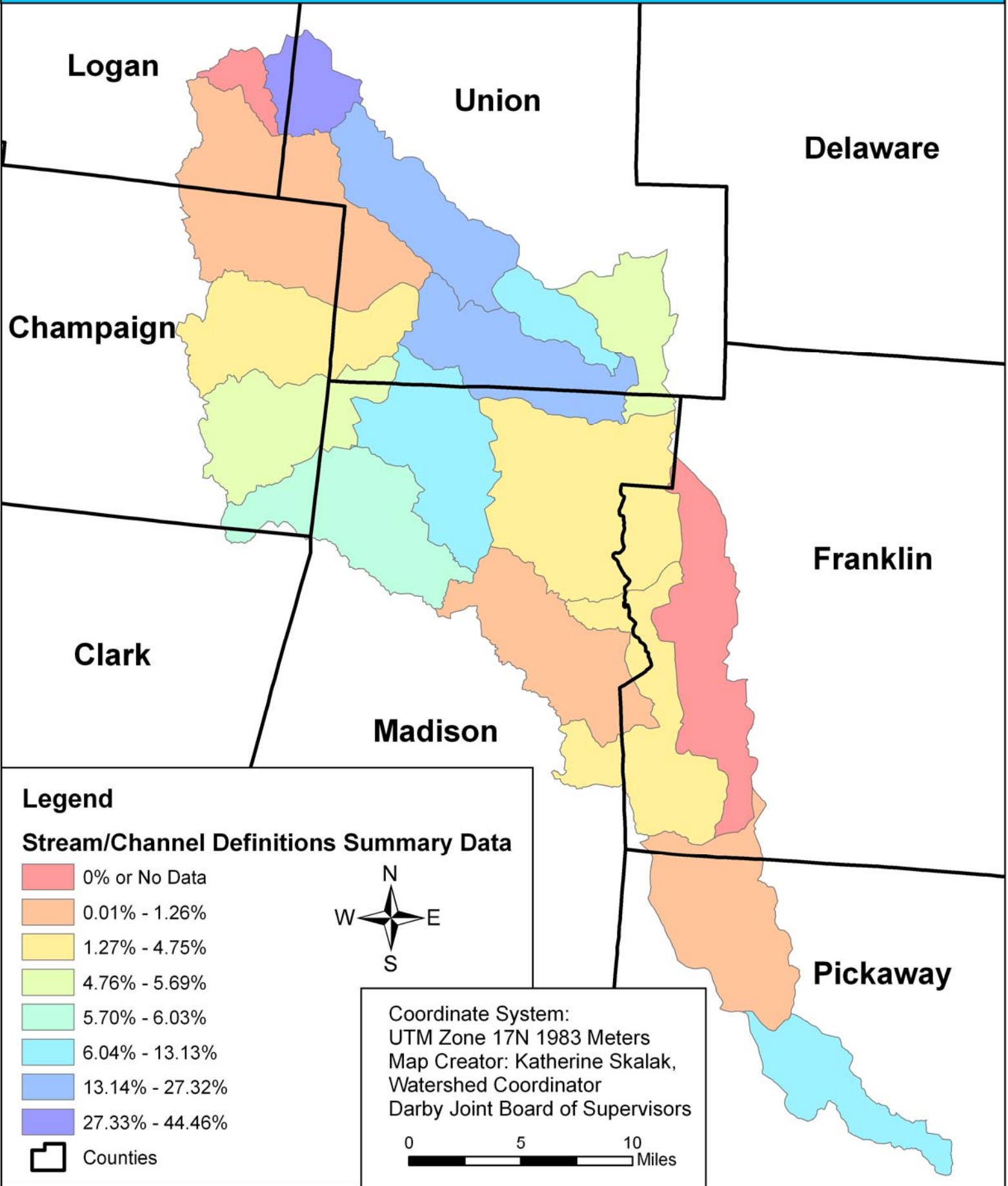
# Darby Watershed Summary Map

## - Percent Miles Defined as Modified Channel



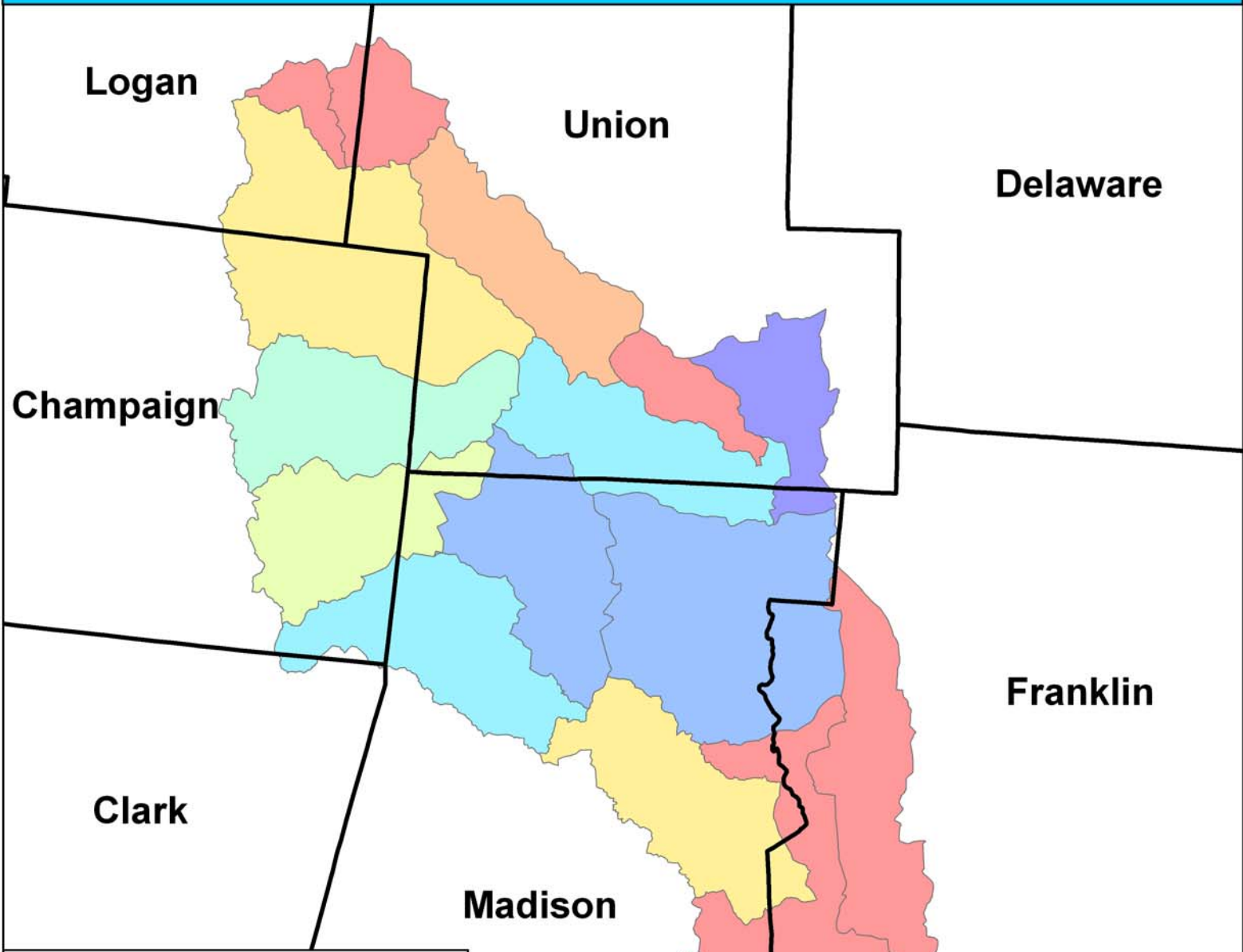
# Darby Watershed Summary Map

## - Percent Miles Defined as Man-Made Channel



# Darby Watershed Summary Map

## - Percent Miles Defined as Maintained Channel



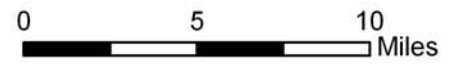
### Legend

#### Stream Buffer Summary Data

- 0% - 0.61%
- 0.62% - 1.49%
- 1.50% - 5.29%
- 5.30% - 7.57%
- 7.58% - 11.12%
- 11.13% - 13.28%
- 13.29% - 36.62%
- 36.63% - 45.24%



Coordinate System:  
 UTM Zone 17N 1983 Meters  
 Map Creator: Katherine Skalak,  
 Watershed Coordinator  
 Darby Joint Board of Supervisors



# Darby Watershed Summary Map

## - Percent Miles that are Tiled

